



REVOLUTIONARY  
TECHNOLOGY MEETS  
REMARKABLE  
PERFORMANCE

HP LaserJet Managed MFPs  
and Printers



# Uncompromising VISION

---

## Exceptional RE- SULTS

*HP LaserJet Managed MFPs and Printers were developed specifically to address essential business printing needs—today and tomorrow.*



When we set out to create this line of LaserJet printers, we tasked our engineers and product teams with designing and developing printers that combined—without compromise—extraordinary design and user experience; exceptional print quality and reliability, even under the heaviest workloads; security that's unmatched in the industry; and extensibility features that allow them to adapt to and benefit from new technologies and new capabilities.

---





As the engineers, designers, and programmers progressed, they continuously validated their decisions against the most important metrics: real-world user expectations and business demands.

The result is an extraordinary portfolio that delivers brilliant, professional-quality prints at a remarkable price.







## PERFORMANCE

# From ideas to output

Performance tells the story. Whether you're printing five pages or fifty, colour or black and white, HP LaserJet Managed MFPs and Printers deliver the professional performance you'd expect from an enterprise machine.

- **Virtually eliminate warm-up time**  
These devices feature fusers that warm rapidly and cool quickly, so they start printing sooner, complete jobs faster, and help you conserve more energy.<sup>1</sup>
- **Spend less time on maintenance**  
These devices require significantly fewer replacement parts, and no manual cleaning of printer components is required to maintain print quality.<sup>2</sup>
- **Get the best print quality automatically, right out of the box**  
There's no need to change driver settings or the control panel. HP LaserJets employ built-in proprietary image enhancement technologies that consistently render vibrant and sharp colour prints, page after page.
- **Minimise downtime**  
Original HP LaserJet High-Yield Cartridges can help you print more pages, more affordably.



## DESIGN

# Purposeful and professional

Design is about more than aesthetics. Done with purpose, it connects form to function—promising performance and conveying confidence. In HP LaserJet Managed MFPs and Printers, simple, intelligent design delivers functionality for today and adaptability for the future.

- Cutting-edge technologies minimise paper jams and faulty inputs.
- Modular feed and finishing accessories offer customisable configuration options.
- User-facing design expedites workflows and print services at the device.
- Efficient scanning, copying, and document digitisation at the device with HP LaserJet MFPs and Printers.
- Seamless monitoring, editing, and updating work in progress with touchscreen controls and a pull-out keyboard.
- Easy printing from your desktop PC, mobile device, or company cloud.





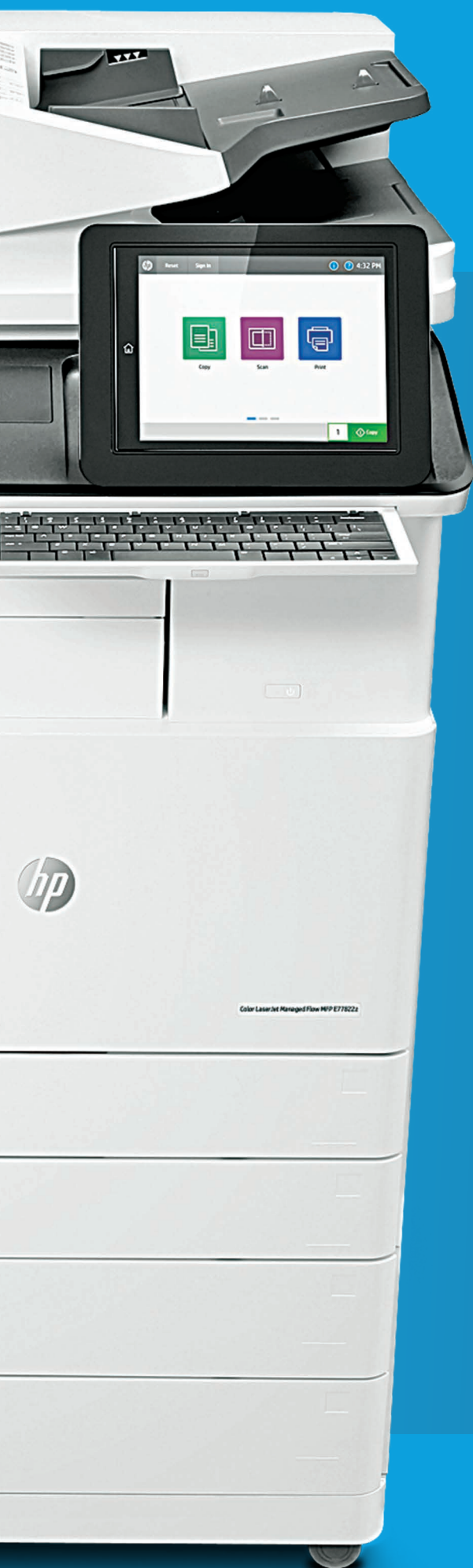


## WORKFLOW

# Effortless integration

HP LaserJet Flow MFPs offer advanced workflow capabilities at the device that optimise your productivity through quick alignment with current workflows and demands. Flow solutions help you capture the right content, organise, and distribute it quickly, easily, and accurately—helping you save time and effort on complex scanning and printing projects.<sup>3</sup>





### **Auto-orientation, auto-page crop, and auto-tone**

Advanced document management features simplify production and perfect the contrast, brightness, and background removal of each page.



### **Built-in optical character recognition (OCR)**

The OCR simplifies editable and searchable scans.



### **Fast two-sided, single-pass scanning**

Scan faster and more reliably with speeds up to 200 ipm and an extended-life ADF that supports higher recommended monthly scan volumes.<sup>4</sup>



### **Large 8.1-inch touchscreen control panel**

Advanced imaging and processing options, including send to Microsoft SharePoint, built-in OCR, auto-orientation, auto-page-crop, and auto-tone.



### **Embedded HP EveryPage technology**

Scan every page and detect potential errors or missed pages on the spot—even when the weight, size, or condition of pages vary.



### **Large pull-out keyboard for simplified data entry**

Make scanned documents easier to organise and find by adding information to files and context to your email.



### **HP Quick Sets**

Find the right document workflow every time, and run it correctly at the touch of a button. HP Quick Sets automates all the steps of a complicated workflow, on a full-colour touchscreen that's easy to use.





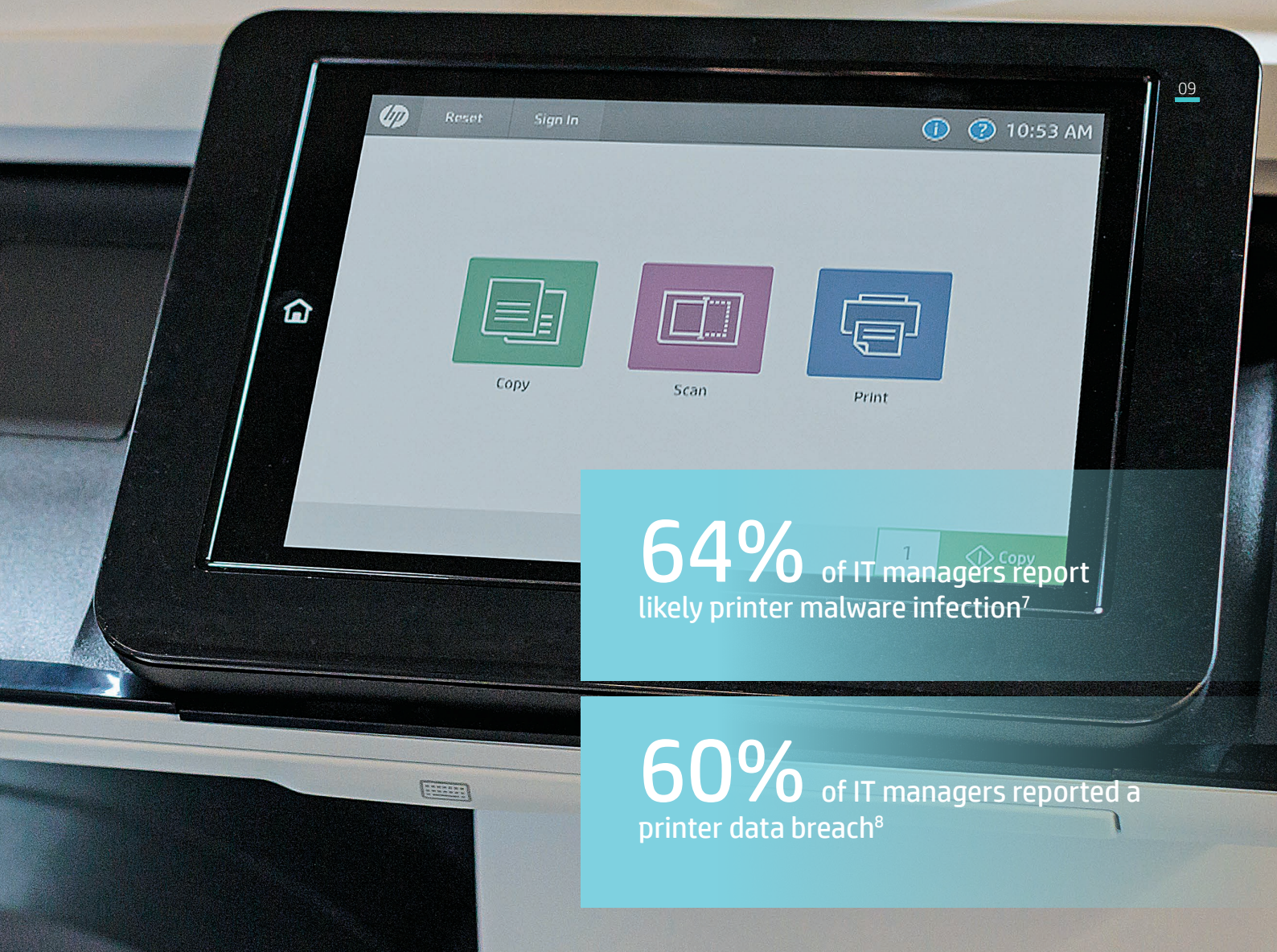
## SECURITY

# HP's most secure printing<sup>5</sup>

Today, hackers have their eyes on businesses. The most destructive exploits are attacking networks through endpoint devices—and not just PCs, tablets, and smartphones. Networked printers are a new front line, vulnerable to attacks and security breaches. Hackers can intercept printing and imaging jobs traveling over the network from devices to printers; manipulate printer settings and functions from unsecured control panels; and access privileged data via unsecured USB or network ports.

The good news? HP saw it coming. We developed LaserJet Enterprise Managed MFPs and Printers with embedded security features covering device, data, and document risks. These solutions change the equation—transforming networked printers from vulnerabilities to strongpoints.





### SECURE THE DEVICE

- HP SureStart monitors and maintains the BIOS
- Whitelisting helps protect the firmware
- Run-time intrusion detection keeps memory safe
- HP Connection Inspector stops suspicious network connections



### SECURE THE DATA

- Multi-factor authentication blocks unauthorised access
- Encryption prevents data theft and alteration
- Monitoring identifies threats and self-heals



### SECURE THE DOCUMENT

- Workplace privacy and compliance through secure document workflows
- Anti-counterfeit tools deter tampering and fraud

### Easily manage security across the fleet

HP JetAdvantage Security Manager offers an effective, policy-based approach to helping secure HP printing and imaging devices. Get the support you need to build, deploy, and maintain your device security and compliance plan.<sup>6</sup>

For more information on HP printing security features, visit [hp.com/go/printersthatprotect](https://hp.com/go/printersthatprotect).



A background image showing a close-up of a white HP printer with a black control panel. A tablet is positioned in front of the printer, displaying the HP Open Extensibility Platform (OXP) interface. The interface includes the HP logo, a 'Reset' button, a home icon, and a green document icon labeled 'Copies'.

## EXTENSIBILITY

# Forward-thinking adaptability

Technology, capabilities, and user expectations never stop evolving, and HP FutureSmart Firmware and the HP Open Extensibility Platform (OXP) let your printers evolve as well.

### **FutureSmart firmware**

- Extends the life of the printer
- Offers consistency across your entire fleet via an intuitive interface
- Simplifies fleet-wide updates
- Allows your existing HP devices to be equipped with next-generation features<sup>9</sup>

### **HP OXP**

- Creates a unified environment for third-party software companies and enabled imaging and printing devices
- Integrates the third-party solutions you rely on today with your printer fleet tomorrow









## SOLUTIONS

# Focus on results

Help reduce costs, increase work efficiency, and accelerate business results with HP printing solutions. Help streamline information workflows by optimising your IT infrastructures, managing your imaging and printing environments, and improving document intensive processes.

**HP JetAdvantage Connect** lets you seamlessly leverage existing IT network tools and policies to manage mobile printing. Securely print from a variety of smartphones and tablets as easily as from a PC.<sup>10</sup>

**HP Access Control Printing Solutions** helps you provide print authentication, authorisation, and secure pull-printing capabilities across your organisation, and protect sensitive information with custom user controls and usage rights. Proximity card readers can be attached externally or placed in the Hardware Integration Pocket (HIP) of supported devices.<sup>11</sup>

**HP Embedded Capture** eliminates the need for a server and simplifies the digitisation of your documents by digitised predetermined scanning information.

**HP Capture and Route** controls and tracks scanned content once it has been digitised and distributes it to its printing location.





# Introducing HP JetAdvantage On Demand

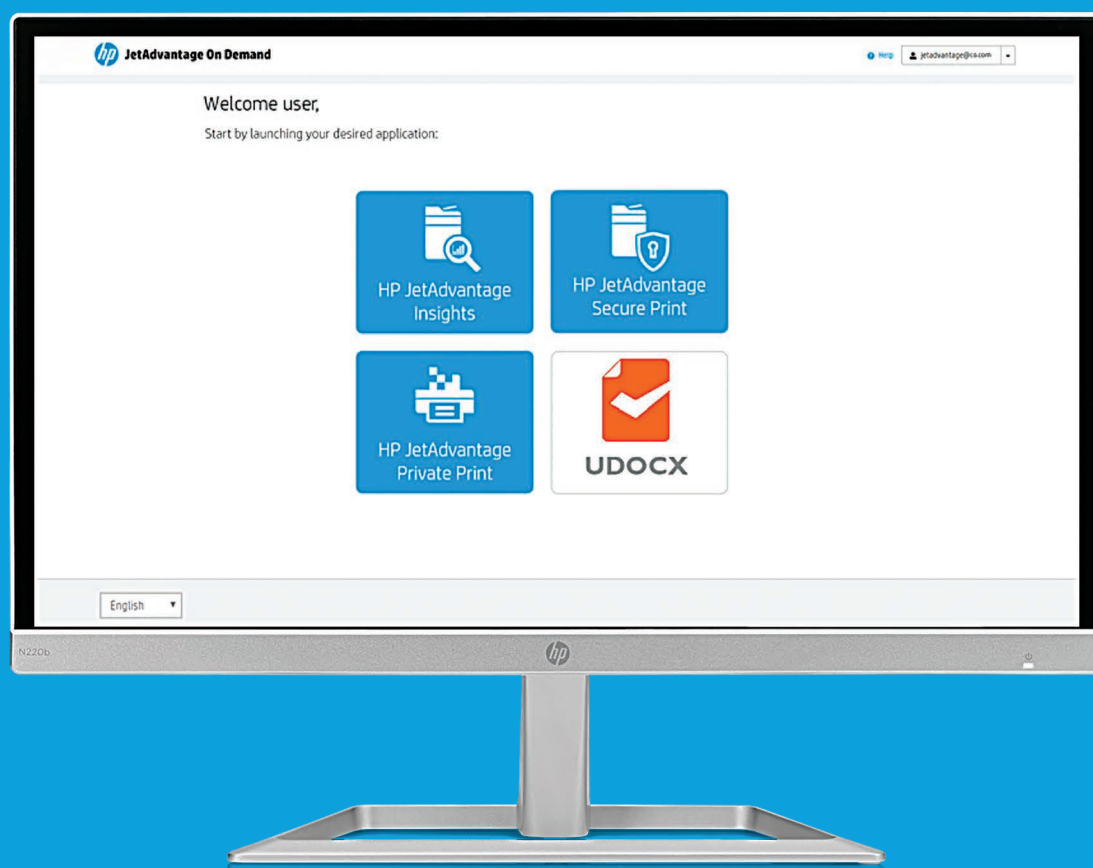
HP JetAdvantage On Demand is the industry's first software as a service (SaaS) portal that allows for easy and cost-effective management of both apps and user access to those apps.<sup>12</sup>

**HP JetAdvantage Private Print** helps secure documents with a pull printing app for select HP devices.

**HP JetAdvantage Secure Print** helps secure and track print jobs for all HP and non-HP networked devices.

**HP JetAdvantage Insights** optimises the print environment by transforming data into action.

**Udocx (third-party solution)** increases productivity and improves corporate efficiency by uniformly digitising all your documents.





# Meet the HP A3 LaserJet E700XX and E800XX series

The next generation of quality, productivity, and security

Businesses that stay ahead don't slow down. It's why HP created the next generation of HP LaserJet Managed MFPs—to power office productivity with a smart, streamlined design that's reliable and hassle-free. Count on premium quality, maximum uptime, and advanced security—all made to drive successful organisations forward.<sup>5</sup>

For more information on the latest HP LaserJet Managed MFPs and Printers, watch the video [here](#).\*

\* <http://www8.hp.com/us/en/printers/a3-multifunction/managed-color-laserjet-printer.html>



Our latest LaserJet Managed MFPs and Printers redefine excellence with game-changing LaserJet printing innovations:

Low operating cost per page (OCP) with long life consumables and field-replaceable parts

Flow options on most models

More robust page volume and engine life (up to 100,000 pages RMPV)

Larger and faster; up to 250 sheet ADF

Latest HP FutureSmart printer firmware<sup>9</sup>

Flexible, modular paper handling and finishing for maximum productivity

Device-based sensing capabilities that monitor and diagnose many service needs

Smaller footprint than previous generation



# HP A3 LaserJet Managed Portfolio



## Colour A3

25 ppm price class		35 ppm price class		45 ppm price class			55 ppm price class
							
<b>Color LaserJet Managed MFP E77822</b>	<b>Color LaserJet Managed MFP E77825</b>	<b>Color LaserJet Managed MFP E77830</b>	<b>Color LaserJet Managed MFP E87640</b>	<b>ColorLaserJet Managed MFP M775</b>	<b>Color LaserJet Managed MFP E87650</b>	<b>Color LaserJet Managed Flow MFP M880</b>	<b>Color LaserJet Managed MFP E87660</b>
Up to 22 ppm <sup>13</sup>	Up to 25 ppm <sup>13</sup>	Up to 30 ppm <sup>13</sup>	Up to 40 ppm <sup>13</sup>	Up to 30 ppm <sup>13</sup>	Up to 50 ppm <sup>13</sup>	Up to 45 ppm <sup>13</sup>	Up to 60 ppm <sup>13</sup>
Up to 3140 input <sup>14</sup>	Up to 3140 input <sup>14</sup>	Up to 3140 input <sup>14</sup>	Up to 6140 input <sup>14</sup>	Up to 4350 input <sup>14</sup>	Up to 6140 input <sup>14</sup>	Up to 4100 input <sup>14</sup>	Up to 6140 input <sup>14</sup>
Up to 25,000 RMPV <sup>15</sup>	Up to 25,000 RMPV <sup>15</sup>	Up to 30,000 RMPV <sup>15</sup>	Up to 40,000 RMPV <sup>15</sup>	Up to 30,000 RMPV <sup>15</sup>	Up to 45,000 RMPV <sup>15</sup>	Up to 50,000 RMPV <sup>15</sup>	Up to 50,000 RMPV <sup>15</sup>

## HP A3 LaserJet accessories

Our A3 features go beyond the printed document. To deliver a truly professional printing experience, HP offers optional accessories to help you bind content together, feed multiple sizes of paper, and finish the job with clean staples and hole punches.





## Monochrome A3

25 ppm price class	35 ppm price class			45 ppm price class		55 ppm price class	
							
<b>LaserJet Managed MFP E72525</b>	<b>LaserJet Managed MFP E72530</b>	<b>LaserJet Managed MFP E72535</b>	<b>LaserJet Managed MFP E82540</b>	<b>LaserJet Managed MFP M725</b>	<b>LaserJet Managed MFP E82550</b>	<b>LaserJet Managed MFP M830</b>	<b>LaserJet Managed MFP E82560</b>
Up to 25 ppm <sup>13</sup>	Up to 30 ppm <sup>13</sup>	Up to 35 ppm <sup>13</sup>	Up to 40 ppm <sup>13</sup>	Up to 40 ppm <sup>13</sup>	Up to 50 ppm <sup>13</sup>	Up to 55 ppm <sup>13</sup>	Up to 60 ppm <sup>13</sup>
Up to 3140 input <sup>14</sup>	Up to 3140 input <sup>14</sup>	Up to 3140 input <sup>14</sup>	Up to 6140 input <sup>14</sup>	Up to 4600 input <sup>14</sup>	Up to 6140 input <sup>14</sup>	Up to 4600 input <sup>14</sup>	Up to 6140 input <sup>14</sup>
Up to 40,000 RMPV <sup>15</sup>	Up to 45,000 RMPV <sup>15</sup>	Up to 50,000 RMPV <sup>15</sup>	Up to 80,000 RMPV <sup>15</sup>	Up to 40,000 RMPV <sup>15</sup>	Up to 90,000 RMPV <sup>15</sup>	Up to 100,000 RMPV <sup>15</sup>	Up to 100,000 RMPV <sup>15</sup>



2 x 520-sheet feeder



2000-sheet high-capacity input



3000-sheet side high-capacity input<sup>16</sup>



Inner finisher hole punch<sup>17</sup>



Stapler/stacker/hole punch<sup>18</sup>



Booklet finisher<sup>18</sup>

# HP A4 LaserJet Managed Portfolio



## Colour A4

25 ppm price class		35 ppm price class		45 ppm price class			55 ppm price class
							
<b>Color LaserJet Managed M553</b>	<b>Color LaserJet Managed MFP M577</b>	<b>Color LaserJet Managed MFP M651</b>	<b>Color LaserJet Managed M680</b>	<b>Color LaserJet Managed E65050dn</b>	<b>Color LaserJet Managed E67550dh</b>	<b>Color LaserJet Managed E65060dn</b>	<b>Color LaserJet Managed MFP E67560z</b>
Up to 40 ppm <sup>13</sup>	Up to 40 ppm <sup>13</sup>	Up to 45 ppm <sup>13</sup>	Up to 45 ppm <sup>13</sup>	Up to 50 ppm <sup>13</sup>	Up to 50 ppm <sup>13</sup>	Up to 60 ppm <sup>13</sup>	Up to 60 ppm <sup>13</sup>
Up to 2300 input <sup>14</sup>	Up to 2300 input <sup>14</sup>	Up to 3100 input <sup>14</sup>	Up to 3100 input <sup>14</sup>	Up to 3200 input <sup>14</sup>	Up to 3200 input <sup>14</sup>	Up to 3200 input <sup>14</sup>	Up to 3200 input <sup>14</sup>
Up to 15,000 RMPV <sup>15</sup>	Up to 15,000 RMPV <sup>15</sup>	Up to 30,000 RMPV <sup>15</sup>	Up to 30,000 RMPV <sup>15</sup>	Up to 24,000 RMPV <sup>15</sup>	Up to 24,000 RMPV <sup>15</sup>	Up to 30,000 RMPV <sup>15</sup>	Up to 30,000 RMPV <sup>15</sup>

## HP A4 LaserJet accessories

Add features to your HP A4 LaserJet Managed MFPs and Printers for a customised user experience that fits your workplace needs.



## Monochrome A4

### 25 ppm price class



**LaserJet Managed  
M506**

Up to 45 ppm<sup>13</sup>

Up to 2300 input<sup>14</sup>

Up to 15,000 RMPV<sup>15</sup>

### 35 ppm price class

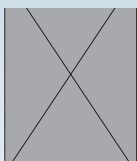


**LaserJet Managed  
MFP M527**

Up to 45 ppm<sup>13</sup>

Up to 2300 input<sup>14</sup>

Up to 15,000  
RMPV<sup>15</sup>



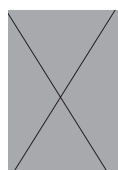
**LaserJet Managed  
M605**

Up to 58 ppm<sup>13</sup>

Up to 3600 input<sup>14</sup>

Up to 40,000 RMPV<sup>15</sup>

### 45 ppm price class



**LaserJet Managed MFP  
M630**

Up to 60 ppm<sup>13</sup>

Up to 3100 input<sup>14</sup>

Up to 40,000 RMPV<sup>15</sup>

### 55 ppm price class



**LaserJet Managed  
MFP E60055dn**

Up to 55 ppm<sup>13</sup>

Up to 4400 input<sup>14</sup>

Up to 30,000 RMPV<sup>15</sup>



**LaserJet Managed  
MFP E62555dn**

Up to 55 ppm<sup>13</sup>

Up to 3750 input<sup>14</sup>

Up to 40,000 RMPV<sup>15</sup>

### 65+ ppm price class



**LaserJet  
Managed  
E60065dn**

Up to 65 ppm<sup>13</sup>

Up to 4400  
input<sup>14</sup>

Up to 40,000  
RMPV<sup>15</sup>



**LaserJet  
Managed MFP  
E62565**

Up to 65 ppm<sup>13</sup>

Up to 3750 input<sup>14</sup>

Up to 40,000  
RMPV<sup>15</sup>



**LaserJet  
Managed MFP  
E62575z**

Up to 75 ppm<sup>13</sup>

Up to 3750 input<sup>14</sup>

Up to 40,000  
RMPV<sup>15</sup>



**LaserJet Managed  
E60075dn**

Up to 75 ppm<sup>13</sup>

Up to 4400 input<sup>14</sup>

Up to 50,000  
RMPV<sup>15</sup>



550-sheet  
feeder



Printer stand and  
cabinet



500-sheet feeder  
and cabinet



2500-sheet HCI  
and stand



Stapler/stacker/  
mailbox

## HP Color LaserJet A3 Managed

	Color LaserJet Managed MFP E77822/ MFP E77825	Color LaserJet Managed MFP E77830	Color LaserJet Managed MFP E87640	Color LaserJet Managed MFP M775	Color LaserJet Managed MFP E87650	Color LaserJet Managed Flow MFP M880	Color LaserJet Managed MFP E87660
<b>Product number</b>	E77822dn: X3A78A Flow E77822z: X3A77A E77825dn: X3A81A Flow E77825z: X3A80A	E77830dn: X3A84A Flow E77830z: X3A83A	E87640dn: X3A87A Flow E87640z: X3A86A	M775fm: L3U49A M775zm: L3U50A	E87650dn: X3A90A Flow E87650z: X3A89A	Flow M880zm: L3U51A Flow M880zm+: L3U52A	E87660dn: X3A93A Flow E87660z: X3A92A
<b>Control panel</b>	8.1-inch (20.6cm) colour touchscreen; Flow models: built-in keyboard			8.07-inch (20.5cm) colour touchscreen	8.1-inch (20.6cm) colour touchscreen Flow model: built-in keyboard	8.0-inch (20.3cm) colour touchscreen Flow model: built-in keyboard	8.1-inch (20.6cm) colour touchscreen Flow model: built-in keyboard
<b>Print speed (letter and A4)<sup>13</sup></b>	Up to 22 ppm, letter (25 ppm, A4)	Up to 30 ppm	Up to 40 ppm	Up to 30 ppm	Up to 50 ppm	Up to 45 ppm, letter (46 ppm, A4)	Up to 60 ppm
<b>Input<sup>14</sup></b>	1140 to 3140 sheets		1140 to 6140 sheets	1350 to 4350 sheets	1140 to 6140 sheets	2100 to 4100 sheets	1140 to 6140 sheets
<b>RMPV<sup>15</sup></b>	Up to 25,000 pages	Up to 30,000 pages	Up to 40,000 pages	Up to 30,000 pages	Up to 45,000 pages	Up to 50,000 pages	Up to 50,000 pages

## HP Monochrome LaserJet A3 Managed

	LaserJet Managed MFP E72525/ MFP E72530	LaserJet Managed MFP E72535	LaserJet Managed MFP E82540	LaserJet Managed MFP M725	LaserJet Managed MFP E82550	LaserJet Managed MFP M830	LaserJet Managed MFP E82560
<b>Product number</b>	E72525dn: X3A60A Flow E72525z: X3A59A E72530dn: X3A63A Flow E72530z: X3A62A	E72535dn: X3A66A Flow E72535z: X3A65A	E82540dn: X3A69A Flow E82540z: X3A68A	M725dnm: L3U63A M725zm: L3U64A	E82550dn: X3A72A Flow E82550z: X3A71A	Flow M830zm: L3U65A	E82560dn: X3A75A Flow E82560z: X3A74A
<b>Control panel</b>	8.1-inch (20.6cm) colour touchscreen Flow models: built-in keyboard			8.0-inch (20.3cm) colour touchscreen	8.1-inch (20.6cm) colour touchscreen Flow model: built-in keyboard	8.0-inch (20.3cm) colour touchscreen Flow model: built-in keyboard	8.1-inch (20.6cm) colour touchscreen Flow model: built-in keyboard
<b>Print speed (letter and A4)<sup>13</sup></b>	Up to 25/30 ppm	Up to 35 ppm	Up to 40 ppm		Up to 50 ppm	Up to 55 ppm	Up to 60 ppm
<b>Input<sup>14</sup></b>	1140 to 3140 sheets		1140 to 6140 sheets	600 to 4600 sheets	1140 to 6140 sheets	4600 sheets	1140 to 6140 sheets
<b>RMPV<sup>15</sup></b>	Up to 40,000/ 45,000 pages	Up to 50,000 pages	Up to 80,000 pages	Up to 40,000 pages	Up to 90,000 pages	Up to 100,000 pages	Up to 100,000 pages



## HP Color LaserJet A4 Managed

	Color LaserJet Managed M553	Color LaserJet Managed MFP M577	Color LaserJet Managed M651	Color LaserJet Managed MFP M680
Product number	M553dnm: B5L38A M553xm: B5L39A	M577dnm: B5L49A Flow M577cm: B5L50A	M651dnm: H0DC9A M651xhm: L8Z07A	M680dnm: L3U47A Flow M680zm: L3U48A
Control panel	M553dnm: 4-line LCD (colour graphics) with 10-key pad M553xm: 4.3-inch (10.9cm) colour touchscreen	8.0-inch (20.3cm) colour touchscreen Flow model: built-in keyboard	4.3-inch (10.9cm) colour touchscreen	8.0-inch (20.3cm) colour touchscreen Flow model: built-in keyboard
Print speed (letter and A4) <sup>13</sup>	Up to 40 ppm, letter (38 ppm, A4)		Up to 45 ppm, letter (42 ppm, A4)	
Input <sup>14</sup>	650 to 2300 sheets		600 to 3100 sheets	
RMPV <sup>15</sup>	Up to 15,000 pages		Up to 30,000 pages	

	Color LaserJet Managed E65050	Color LaserJet Managed MFP E65060	Color LaserJet Managed MFP E67550	Color LaserJet Managed MFP E67560
Product number	L3U55A	L3U56A	L3U66A	L3U70A
Control panel	2.7-inch (6.9cm) colour graphics display with keypad	4.3-inch (10.9cm) icon-based colour touchscreen	8.0-inch (20.3cm) icon-based colour touchscreen	8.0-inch (20.3cm) icon-based colour touchscreen
Print speed (letter and A4) <sup>13</sup>	Up to 50/47 ppm	Up to 60/56 ppm	Up to 50/47 ppm	Up to 60/56 ppm
Input <sup>14</sup>	Up to 3200 sheets		Up to 3200 sheets	
RMPV <sup>15</sup>	Up to 24,000 pages	Up to 30,000 pages	Up to 24,000 pages	Up to 30,000 pages

## HP Monochrome LaserJet A4 Managed

	LaserJet Managed M506	LaserJet Managed MFP M527	LaserJet Managed M605	LaserJet Managed MFP M630
<b>Product number</b>	M506dnm: F2A66A M506xm: F2A67A	M527dnm: F2A79A Flow M527cm: F2A80A	M605dnm: L3U53A M605xm: L3U54A	M630hm: L3U61A Flow M630hm: P7Z48A Flow M630zm: L3U62A
<b>Control panel</b>	M506dnm: 4-line LCD (colour graphics) with 10-key pad M506xm: 4.3-inch (10.9cm) colour touchscreen	8.0-inch (20.3cm) colour touchscreen Flow model: built-in keyboard	M605dnm: 4-line LCD (colour graphics) with 10-key pad M605xm: 4.3-inch (10.9cm) colour touchscreen	8.0-inch (20.3cm) colour touchscreen Flow models: built-in keyboard
<b>Print speed (letter and A4)<sup>13</sup></b>	Up to 45 ppm	Up to 45 ppm	Up to 58 ppm	Up to 60 ppm
<b>Input<sup>14</sup></b>	650 to 2300 sheets		600 to 3600 sheets	600 to 3100 sheets
<b>RMPV<sup>15</sup></b>	Up to 15,000 pages		Up to 40,000 pages	

	LaserJet Managed E60055	LaserJet Managed E60065	LaserJet Managed E60075	LaserJet Managed MFP E62555	LaserJet Managed MFP E62565	LaserJet Managed MFP E62575
<b>Product number</b>	M0P36A (x)	M0P35A (dn)/ M0P36A (z)	M0P39A (dn)/ M0P40A (x)	J8J66A	J8J73A (hs)/ J8J74A (h)/ J8J79A (z)	J8J80A
<b>Control panel</b>	2.7-inch (6.9cm) LCD with keypad	2.7-inch (6.9cm) LCD with keypad (dn)/4.3-inch (10.9cm) colour touchscreen control panel (z)		8.0-inch (20.3cm) intuitive icon-based colour touchscreen		
<b>Print speed (letter and A4)<sup>13</sup></b>	Up to 55/52 ppm	Up to 65/61 ppm	Up to 75/71 ppm	Up to 55/52 ppm	Up to 65/61 ppm	Up to 75/71 ppm
<b>Input<sup>14</sup></b>	Up to 4400			Up to 3750 sheets		
<b>RMPV<sup>15</sup></b>	Up to 30,000 pages	Up to 40,000 pages	Up to 50,000 pages	Up to 40,000 pages		



## Optional LaserJet A3 input and finishing accessories

Devices	Compatible accessories
LaserJet Managed MFP E72525, MFP E72530, MFP E72535; Color LaserJet Managed MFP E77822, MFP E77825, MFP E77830	Input: 2 x 520-sheet feeder (Y1F97A), cabinet (Y1G17A), 2000-sheet high-capacity input (Y1F99A) Output: inner finisher (Y1G00A), <sup>9</sup> inner finisher with 2/3 hole punch (Y1G02A), inner finisher with 2/4 hole punch (Y1G03A), inner finisher with Swedish Hole Punch (Y1G04A), stapler/stacker finisher (Y1G18A), <sup>10</sup> booklet finisher (Y1G07A), <sup>10</sup> 2/3 hole punch (Y1G10A), 2/4 hole punch (Y1G11A), Swedish Hole Punch (Y1G12A), job separator (Y1G15A), tray heater (Y1G22A), 2nd exit (Y1G23A), spacer (Y1G24A)
LaserJet Managed MFP E82540, MFP E82550, MFP E82560; Color LaserJet Managed MFP E87640, MFP E87650, MFP E87660	Input: 2 x 520-sheet feeder (Y1F98A), cabinet (Y1G16A), 2000-sheet high-capacity input (Y1G21A), 3000-sheet side high-capacity input (Y1G20A) Output: inner finisher (Y1G00A), inner finisher with 2/3 hole punch (Y1G02A), inner finisher with 2/4 hole punch (Y1G03A), inner finisher with Swedish Hole Punch (Y1G04A), stapler/stacker finisher (Y1G18A), booklet finisher (Y1G07A), 2/3 hole punch (Y1G10A), 2/4 hole punch (Y1G11A), Swedish Hole Punch (Y1G12A), job separator (Y1G01A)
LaserJet Managed MFP M725	Input: 500-sheet feeder (CF239A), 1x500-sheet feeder, cabinet, and stand (CF243A), 3x500-sheet feeder and stand (CF242A), 3,500-sheet HCI and stand (CF245A) Output: Not applicable
Color LaserJet Managed MFP M775	Input: 500-sheet feeder (CE860A), 1x500-sheet feeder with cabinet (CE792A), 3x500-sheet feeder and stand (CE725A), 3,500-sheet HCI and stand (CF305A) Output: Not applicable
LaserJet Managed MFP M830	Input: 3 x 500-sheet feeder and stand (C1N63A), 3500-sheet HCI and stand (C1N64A) Output: Booklet maker/finisher (CZ285A), stapler/stacker (CZ994A), stapler/stacker with 2/3 hole punch (CZ995A)
Color LaserJet Managed MFP M880	Input: 3 x 500-sheet feeder and stand (C1N63A), 3500-sheet HCI and stand (C1N64A) Output: Booklet maker/finisher with 2/3 hole punch (A2W84A), stapler/stacker (A2W80A), stapler/stacker with 2/4 hole punch (A2W82A), booklet maker/finisher (A2W83A), booklet maker/finisher with 2/4 hole punch (CZ999A)

## Optional LaserJet A4 input and finishing accessories

Devices	Compatible accessories
LaserJet Managed M506, LaserJet Managed MFP M527	Input: 550-sheet feeder (F2A72A), printer stand and cabinet (F2A73A) Output: Not applicable
Color LaserJet Managed M553, Color LaserJet Managed MFP M577	Input: 550-sheet feeder (B5L34A), printer stand and cabinet (B5L51A) Output: Not applicable
LaserJet Managed M605	Input: 500-sheet feeder (F2G68A), printer stand (F2G70A), 1,500-sheet input tray (F2G73A), 75-sheet envelope feeder (F2G74A), custom media cassette (F2G75A) Output: Stapler/stacker (F2G72A), 500-sheet stacker (F2G71A), 500-sheet 5-bin mailbox (F2G81A)
Color LaserJet Managed M651	Input: 500-sheet paper tray (CZ261A), 500-sheet paper feeder and cabinet (CZ262A), 2,500-sheet HCI and stand (CZ263A) Output: Not applicable
LaserJet Managed MFP M630	Input: 500-sheet paper tray (B3M73A), 500-sheet paper feeder and cabinet (B3M74A), 2,500-sheet HCI and stand (B3M75A) Output: 900-sheet, 3-bin stapling mailbox (B3M76A)
Color LaserJet Managed MFP M680	Input: 500-sheet paper tray (CZ261A), 500-sheet paper feeder and cabinet (CZ262A), 2,500-sheet HCI and stand (CZ263A) Output: 900-sheet, 3-bin stapling mailbox (CZ264A)
LaserJet Managed E60055dn, LaserJet Managed E60065dn, LaserJet Managed E60075dn	Input: 550-sheet paper feeder (LOH17A), 2100-sheet paper feeder (LOH18A), envelope feeder (LOH21A), printer stand (LOH19A) Output: Stapler/stacker/ mailbox (LOH20A)
LaserJet Managed MFP E62555dn	Input: 550-sheet paper feeder (J8J89A), 1x550-sheet paper feeder with stand and cabinet (J8J91A), 3x550-sheet paper feeder and stand (J8J93A), 1x550 and 2000-sheet HCI feeder and stand (J8J92A), envelope feeder (J8J90A) Output: Not applicable
Color LaserJet Managed MFP E67550dh Color LaserJet E65050dn Color LaserJet E65060dn Color LaserJet Managed MFP E67560z	Input: 1x550-sheet paper feeder (P1B09A), 1x550-sheet paper feed with stand and cabinet (P1B10A), 3x550 sheet paper feeder and stand (P1B11A), 1x550 and 2000 sheet HCI feeder and stand (P1B12A) Output: Not applicable
LaserJet Managed MFP E62565 LaserJet Managed MFP E62575z	Input: 550-sheet paper feeder (J8J89A), 1x550-sheet paper feeder with stand and cabinet (J8J91A), 3x550-sheet paper feeder and stand (J8J93A), 1x550 and 2000-sheet HCI feeder and stand (J8J92A), envelope feeder (J8J90A) Output: Not applicable



# HP Financial Services

HP Financial Services (HPFS) can help you deliver a complete LaserJet print solution to your customer and accelerate their transition to new HP technology, whilst allowing them to preserve budget for other priorities. As the preferred HP financing partner, HPFS has flexible financing solutions to meet your customer's unique business needs.<sup>19</sup>



For more information, visit

[hp.com/go/managedA3](http://hp.com/go/managedA3)

1. Compared to previous generations of HP laser printers. 2. Fewer service parts claim based on BLI analysis of leading in-class A3 MFPs as of August 2016; calculations use publicly available and/or published manufacturer rated yields for longlife consumables and assume 600,000 pages printed (using a 60% black/40% colour ratio); market share as reported by IDC as of Q2 2016. 3. Flow MFP bundles not available for all models. 4. Scan speeds measured from ADF. Actual processing speeds may vary depending on scan resolution, network conditions, computer performance, and application software. 5. Based on HP review of 2016 published embedded security features of HP printers. HP offers a combination of security features for integrity checking down to the BIOS with self-healing capabilities. A FutureSmart service pack update may be required to activate security features. Some features will be made available as a HP FutureSmart service pack update on selected existing Enterprise printer models. For list of compatible products, see [hp.com/go/LJCompatibility](http://hp.com/go/LJCompatibility). 6. HP JetAdvantage Security Manager must be purchased separately. To learn more, please visit: [hp.com/go/securitymanager](http://hp.com/go/securitymanager). Claim based on HP internal research and Solutions Report on HP JetAdvantage Security Manager 2.1 from Buyers Laboratory LLC, February 2015. 7. Ponemon Institute, "Annual Global IT Security Benchmark Tracking Study," March 2015. 8. Ponemon Institute, "Insecurity of Network-Connected Printers," October 2015. 9. Some features enabled by future HP FutureSmart upgrades may not be available on older devices if, for example, physical product characteristics limit the functionality of the new feature. 10. HP JetAdvantage Connect works with leading mobile devices. A one-time plug-in must be installed for devices running Android™ operating system. For details and a list of supported operating systems, see [hp.com/go/JetAdvantageConnect](http://hp.com/go/JetAdvantageConnect). 11. Solutions deployed through the Hardware Integration Pocket (HIP) may require additional purchase. 12. Based on an HP assessment of print manufacturers SaaS offerings as of September 1, 2016, no other print manufacturer offers a single platform for user and app management. Requires Internet access. Supported browsers include Microsoft® Internet Explorer® 9–11, Google Chrome™ 9 and newer, Mozilla® Firefox® 4 and newer, and Safari® 5 and newer. Compatible with select HP LaserJet, PageWide, OfficeJet Pro, and Digital Sender Flow devices that can connect to the Internet. May require a firmware upgrade. Learn more at [hp.com/go/jetadvantageondemand](http://hp.com/go/jetadvantageondemand). 13. Measured using ISO/IEC 24734, excludes first set of test documents. Exact speed varies depending on the system configuration, software application, driver, and document complexity. 14. Maximum input capacity may require purchase of additional optional input accessory. 15. HP recommends that the number of printed pages per month be within the stated range for optimum device performance, based on factors including supplies replacement intervals and device life over an extended warranty period. 16. Only available on the E8000 series. 17. Purchase of the Inner Finisher (Y1G00A) for the LaserJet Managed E72525 MFP, E72530 MFP, E72535 MFP or Color LaserJet Managed E77822 MFP, E77825 MFP, E77830 MFP also requires purchase of 2nd Exit (Y1G23A). 18. Purchase of the Booklet Finisher (Y1G07A) or Stapler/Stacker Finisher (Y1G18A) for the LaserJet Managed E72525 MFP, E72530 MFP, or E72535 MFP also requires purchase of 2nd Exit (Y1G23A) and Spacer (Y1G24A). Purchase of the Booklet Finisher (Y1G07A) or Stapler/Stacker Finisher (Y1G18A) for the Color LaserJet Managed E77822 MFP, E77825 MFP, or E77830 MFP also requires purchase of 2nd Exit (Y1G23A). 19. Financing and service offerings available through Hewlett-Packard Financial Services Company and its subsidiaries and affiliates (collectively HPFSC) in certain countries and is subject to credit approval and execution of standard HPFSC documentation. Rates and terms are based on customer's credit rating, offering types, services and/or equipment type and options. Not all customers may qualify. Not all services or offers are available in all countries. Other restrictions may apply.

© Copyright 2016–2017 HP Development Company, L.P. The information contained herein is subject to change without notice. The only warranties for HP products and services are set forth in the express warranty statements accompanying such products and services. Nothing herein should be construed as constituting an additional warranty. HP shall not be liable for technical or editorial errors or omissions contained herein. Safari is a trademark of Apple Inc., registered in the U.S. and other countries. Android and Google Chrome are trademarks of Google Inc. Microsoft and Internet Explorer are registered trademarks of Microsoft Corporation in the United States and/or other countries. Mozilla and Firefox are registered trademarks of the Mozilla Foundation.